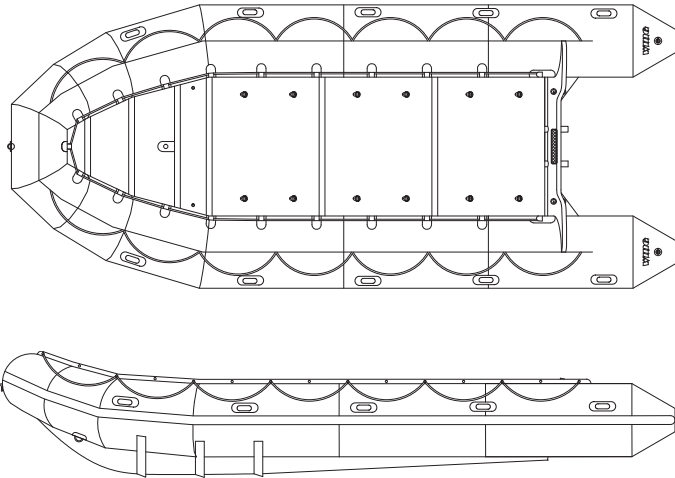


Wing P5.8 CRRC: Commercial and Military Models



- Speed Step design creates hydrodynamic lift and compartmentalizes the running surface to reduce vacuum — affording higher speeds with heavier loads, quicker to plane and greater fuel efficiency
- Tapered tubes result in less resistance in wind and waves for faster performance and a smaller wake
- Tapered tubes and Wing design yields 20% more usable interior deck space, less weight
- Polyurethane-coated fabric affords superior air retention compared to Hypalon®/CSM//CSPE and 25%-50% longer service life
- Composite transom/floor boards resist rot/decay from water intrusion
- Heat-welded seams are significantly stronger than glued seams
- Faster repairs in field (a workable adhesive bond for urethane takes five hours versus two days for Hypalon/CSM//CSPE)
- Berry Amendment Compliant, Buy American Compliant

SPECIFICATIONS		HARD DECK PART # 8500050
LOA		19'2" / 5.8m
Beam		8'2" / 2.5m
Inside Length		13'9" / 4.2m
Inside Width		4' / 1.2m
Buoyancy tube diameter		25" side tubes / .63m
Folded dimensions, bare boat		36" x 36" x 81" / .91m x .91m x 2.06m
Usable deck space		55 ft ² / 5.1m ²
Weight, bare boat without deck		275 lbs / 125kg
Weight, bare boat with hard deck		450 lbs / 204kg
Designed working pressure		4.0 psi / 276mbar
Overload pressure		300% of designed working pressure (min.)
Maximum Payload (including engine & fuel)		6000 lbs / 2722kg
Persons Capacity		15 (not to exceed max. payload)
ENGINE COMPATIBILITY		
Shaft length (long-shaft compatible)		20" / .51m
Recommended horsepower		55 - 90 hp
Maximum horsepower		115 hp
Maximum engine weight		420 lbs / 190.5kg
ACCESSORIES		
Manual pump		2
Repair kit with pressure gauge		1
Boat carrying bag		1
Floorboards bag		1

Specifications are estimates and are subject to variance. Wing reserves the right to change features, options and specifications.

WING
INFLATABLES

Designed Smarter. Built Tougher.

1220 5th Street • Arcata, California, 95521
Phone: 707.826.2887 • www.wing.com

Wing P5.8 CRRC: Commercial and Military Models

INFLATION/SCUPPERS	HARD DECK PART # 8500050
# Airtight chambers	5
Inflatable & replaceable keel	1
Pressure Release Valves	5
Scuppers (high capacity)	2
Auto-inflation points	2 (1 port, 1 starboard)
FABRIC/MATERIAL	
Buoyancy tubes Polyurethane-coated polyester, 40 oz./yd ²	Yes
Bottom: Polyurethane-coated polyester, 40 oz./yd ²	Yes
Thrustboard, removable 5/8" thick solid FRP	1
Deck Joiners: Extruded aluminum, black anodized	6
Transom: Composite w/FRP overlay	1
D-rings on floor 1.5" stainless steel w/black oxide coating	12
Flooring	6 piece composite w/FRP overlay
TRANSPORT	
Heavy-duty carrying handles Custom welded polyurethane with heavy duty hose cover for comfort. Will accommodate gloved hand.	10
Bow D-ring 4.5" stainless steel w/black oxide coating	1
Interior/exterior lifelines Adjustable inboard lifeline	2
Interior tie-down black coated stainless D-rings 1.5" stainless steel w/black oxide coating	21
Lift points (4 point system)	2 lifting eyes on thrustboard (1 port and 1 starboard); 2 lifting eyes on transom (1 port and 1 starboard)
Towing D-rings 2 point towing system: 3" Roller D-Rings	1 port, 1 starboard
Transom Eyes: 2 inboard double as lifting eyes; stainless steel, with black oxide coating	4
REINFORCEMENTS	
Rubstrake: 3" full length of the boat	1
Keel Protection: 3" wide PVC flat rubstrake	1
Anti-splash triangles	2
Transom plates: Cast aluminum inboard for motor clamp, Outboard ABS sacrificial plate	2
Ovoid reinforcement: fore and aft of transom (both sides) for transom attachment	Yes

Specifications are estimates and are subject to variance. Wing reserves the right to change features, options and specifications.

